

Current part is item (17) on diagram. Available at [www.oshkoshequipment.com](http://www.oshkoshequipment.com)

(1) (a) FIG. NO.	(2) (b) ITEM NO.	(3) SMR CODE	(4) NATIONAL STOCK NUMBER	(5) PART NUMBER	(6) FSCM	(7) DESCRIPTION U/M	(8) INC IN UNIT
1209-AIR COMPRESSOR ASSEMBLY							
128	1	PAOZZ	4310-00-863-3155	MS51322-1	96906	COMPRESSOR, RECIPROCATING, POWER DRIVEN	EA 1
128	2	PAOZZ	5330-00-498-2426	11641987	19207	GASKET: UNLOADER VALVE	EA 1
128	3	PAOZZ		N13799E	06721	VALVE ASSEMBLY, UNLOADER: AIR COMPRESSOR	EA 1
128	4	PAOZZ	5330-00-828-5027	7748823	19207	GASKET: COMPRESSOR DISCHARGE ELBOW	EA 1
128	5	PAOZZ	5310-00-550-1130	MS35333-40	96906	WASHER, LOCK: 1/4 ID, 0.478 OD, UNLOADER VALVE ASSEMBLY TO AIR COMPRESSOR	EA 4
128	6	PAOZZ	5310-00-768-0319	MS51968-2	96906	NUT, PLAIN, HEXAGON: UNLOADER VALVE TO COMPRESSOR	EA 4
128	7	PAOZZ	4730-00-202-9744	201697	06853	ELBOW, PIPE TO TUBE: COMPRESSOR UNLOADER VALVE	EA 1
128	8	PAOZZ	4730-00-518-9043	5189043	19207	ELBOW, FLANGE TO TUBE: AIR COMPRESSOR DISCHARGE AB	EA 1
128	9	PAZZ	4730-00-054-2572	MS39196-4	96906	NUT, TUBE COUPLING: COMPRESSOR ELBOW AB, AC	EA 1
128	10	PAOZZ	4730-00-054-2571	MS39197-4	96906	SLEEVE, COMPRESSION: COMPRESSOR ELBOW AB, AC	EA 1
128	11	PAOZZ	4730-00-078-4097	8748337	19207	ELBOW, TUBE TO BAR: DISCHARGE AIR COMPRESSOR AB	EA 1
128	12	PAOZZ	5310-00-959-4679	MS35340-45	96906	WASHER, LOCK: COMPRESSOR DISCHARGE AND AIR CLEANER TO COMPRESSOR	EA 4
128	13	PAOZZ	5306-00-225-8503	MS90725-39	96906	BOLT, MACHINE: DISCHARGE ELBOW AB	EA 2
128	14	PAOZZ	5306-00-225-8499	MS90725-34	96906	SCREW, CAP, HEXHEAD: AIR COMPRESSOR DISCHARGE MANIFOLD TO AIR COMPRESSOR AC	EA 2
128	15	PAOZZ	2530-00-908-7303	7771286	19207	MANIFOLD, DISCHARGE: AIR COMPRESSOR AC	EA 1
128	16	PAOZZ	5306-00-225-8497	MS90725-32	96906	BOLT, MACHINE, HEXHEAD: AIR CLEANER TO AIR COMPRESSOR	EA 2
128	17	PAOZZ	5330-00-818-0508	7748826	19207	GASKET: AIR COMPRESSOR AIR CLEANER	EA 1
128	18	PAOZZ	2530-00-986-0013	MS53005-1	96906	AIR CLEANER, INTAKE: AIR COMPRESSOR	EA 1
128	19	PAOZZ	5315-00-012-4553	MS35756-17	96906	KEY, WOODRUFF: COMPRESSOR SHAFT PULLEY	EA 1
128	20	PAOZZ	2530-00-860-0573	10889938	19207	PULLEY, HALF COMPRESSOR: COMPRESSOR DRIVE	EA 1
128	21	PAOZZ	5305-00-269-3214	MS90725-64	96906	SCREW, CAP, HEXHEAD: ADJUSTABLE PULLEY HALF TO PULLEY FLANGE	EA 2
128	22	PAOZZ	5310-00-959-4675	MS35340-46	96906	WASHER, LOCK: ADJUSTABLE PULLEY HALF TO PULLEY FLANGE	EA 2
128	23	PAOZZ	3030-00-294-9541	8332236	19207	BELT: DRIVE, AIR COMPRESSOR AA	EA 1
128	23	PAOZZ	3030-00-849-1033	10889932	19207	BELT: DRIVE, AIR COMPRESSOR AB, AC	EA 1



Current part is item (17) on diagram. Available at [www.oshkoshequipment.com](http://www.oshkoshequipment.com)

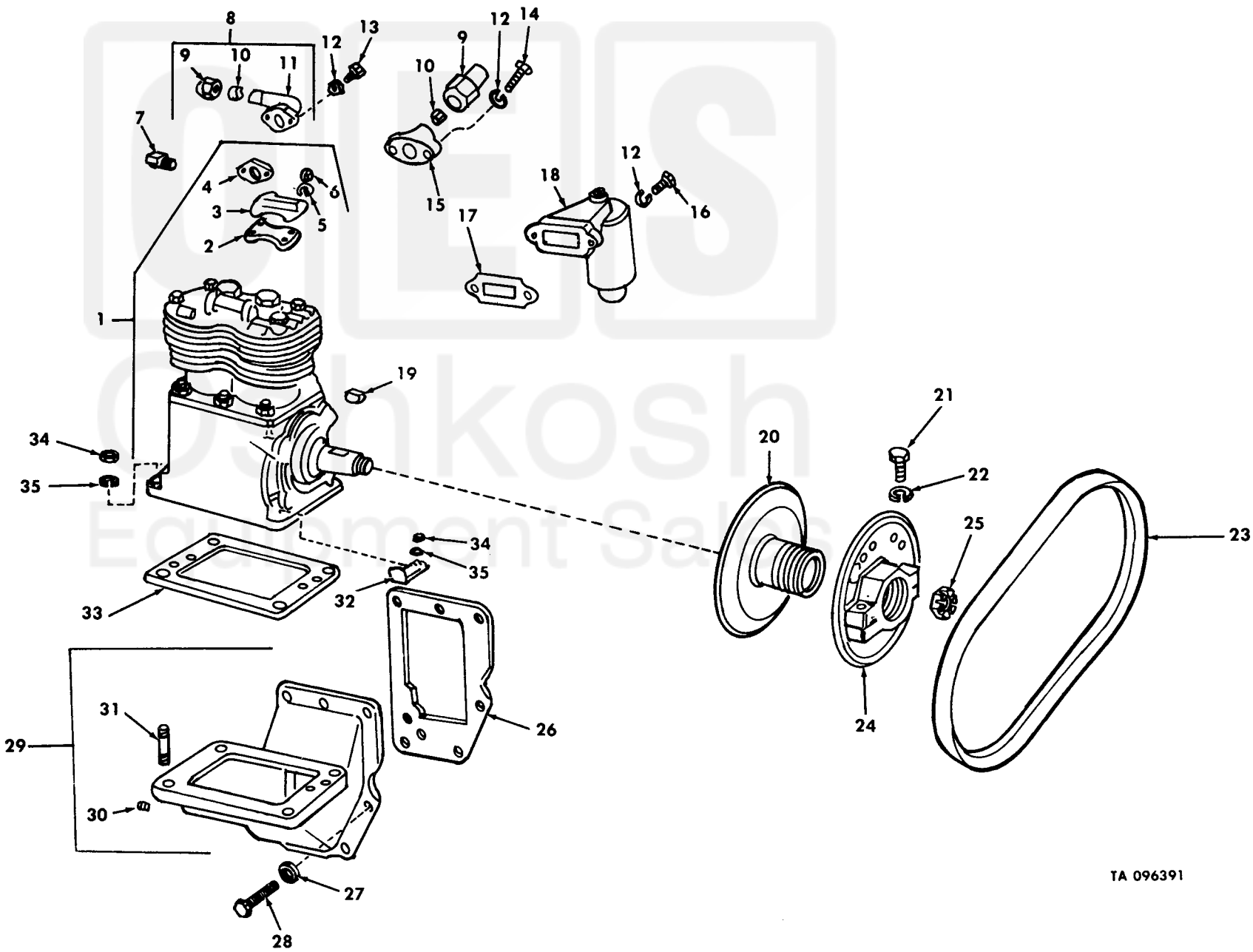


Figure 128. Air compressor, pulley and belt.

Current part is item (17) on diagram. Available at [www.oshkoshequipment.com](http://www.oshkoshequipment.com)